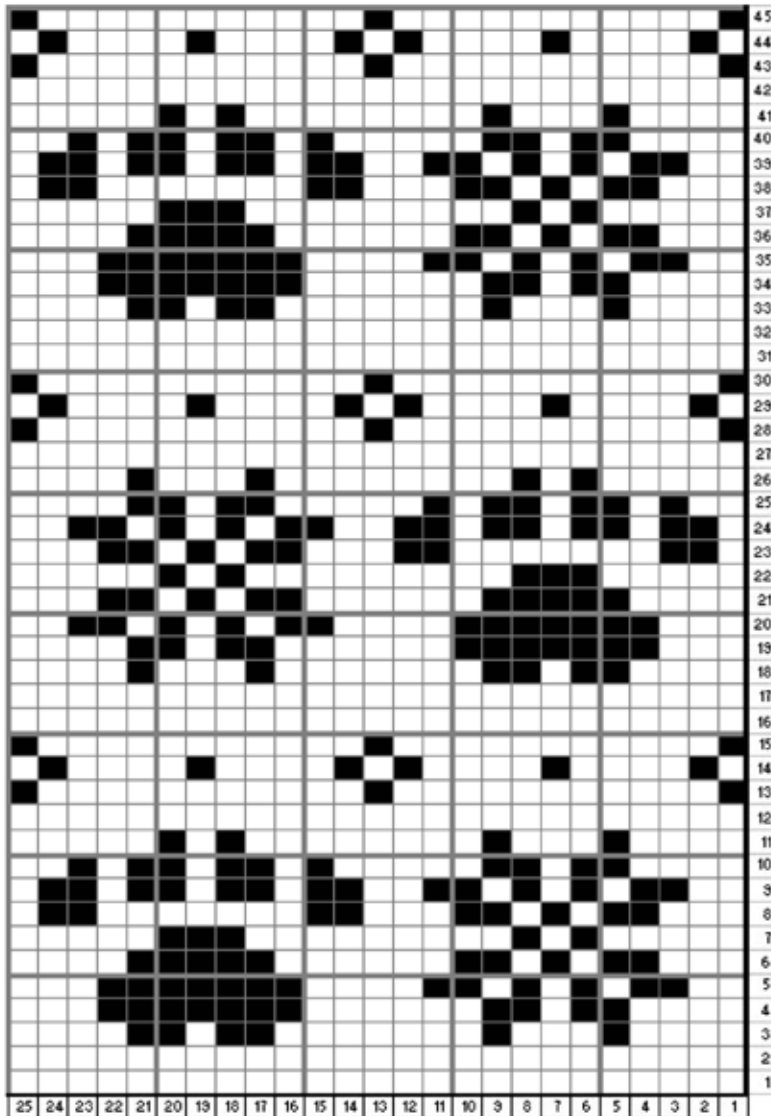


# Knit your way into *Holiday Mode*



**Yarn:** Jawoll Superwash Solids, 50g/210m. One skein each of Grass Green 198 (MC), and Purple 190 (CC)  
**Needles:** 2.75mm in your choice of straight or circulars  
**Notions:** darning needle, scissors  
**Gauge:** 28 sts = 4"

## Smartphone Sweater Pattern:

### Front

CO 25 stitches  
 Rib for 1.5cm (approx. 6 rows)  
 Work chart from start to finish,  
 do not cast off.

### Back

Continue working  
 with MC in stocking stitch  
 until piece measures 22cm.  
 Rib for 1.5cm. Cast off.

### Sleeves (make two)

CO 18 sts  
 Rib for 1.5cm (approx. 6 rows)  
 Work four rows stocking stitch  
 Work increase row: kfb, k to last two sts,  
 kfb, k1 (20 sts).  
 Work five rows stocking stitch.  
 Work increase row a second time (22 sts).  
 Work five rows stocking stitch.  
 Work increase row a third time (24 sts).  
 Purl one row.  
 Work decrease row: k1, ssk,  
 k to last three sts, k2tog, k1 (22 sts).  
 Purl one row.  
 Repeat the last two rows twice more (18sts).  
 Work double decrease row: K1, ssk, ssk,  
 k to last five sts, k2tog, k2tog, k1 (14 sts).  
 Purl one row.  
 Cast off.

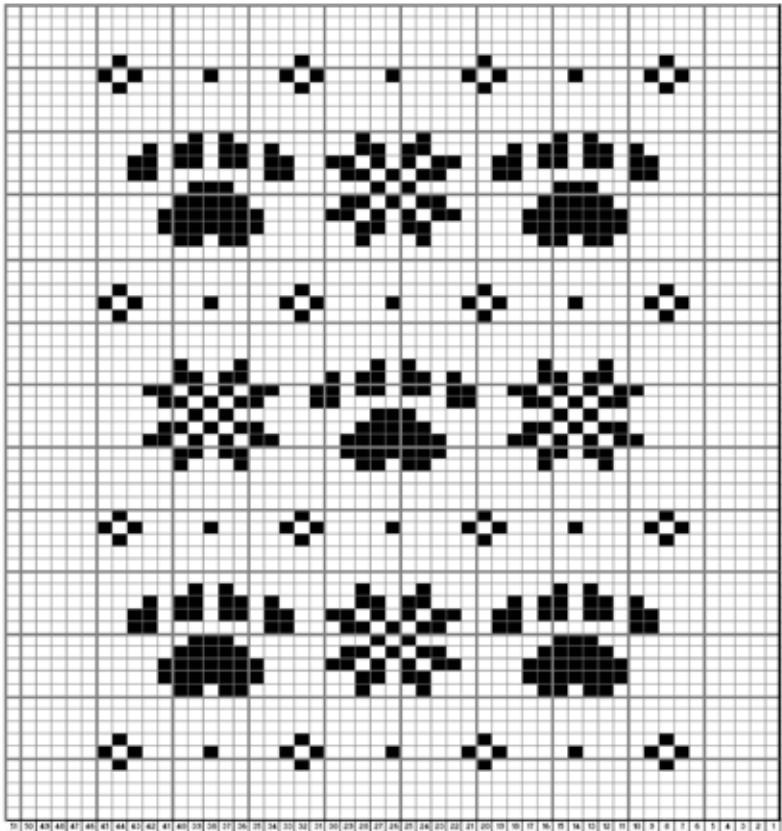
### Finishing

Sew side seams of body leaving a 3cm  
 hole at each shoulder for sleeves.  
 Sew side seams of sleeves, then sew  
 each sleeve into place in those 3cm holes.  
 Wash and block.

## Glossary

MC = main colour      Rib = knit 1, purl 1  
 CC = contrasting colour      K = knit  
 CO = cast on      P = purl  
 Kfb = increase one stitch by knitting into the front  
 and the back leg of this stitch.  
 Stocking Stitch = knit on front and purl on back of piece.  
 K2TOG = decrease one stitch by inserting your right  
 hand needle into two stitches and knitting them together.  
 SSK = decrease one stitch by slipping two stitches,  
 one at a time, from the left needle to the right.  
 Then insert left hand needle back into those  
 two stitches and knit them together.

# Knit your way into *Holiday Mode*



**Yarn:** Jawoll Superwash Solids, 50g/210m. One skein each of Grass Green 198 (MC), and Purple 190 (CC)  
**Needles:** 2.75mm in your choice of straight or circulars  
**Notions:** darning needle, scissors  
**Gauge:** 28 sts = 4"

## Mini tablet Sweater Pattern:

### Front

CO 51 stitches  
 Rib for 1.5cm (approx. 6 rows)  
 Work chart from start to finish,  
 do not cast off.

### Back

Continue working  
 with MC in stocking stitch  
 until piece measures 36cm.  
 Rib for 1.5cm. Cast off.

### Sleeves (make two)

CO 18 sts  
 Rib for 1.5cm (approx. 6 rows)  
 Work **increase row:** kfb, k to last two sts,  
 kfb, k1 (20 sts).  
 Work five rows stocking stitch.  
 Work increase row a second time (22 sts).  
 Work five rows stocking stitch.  
 Work increase row a third time (24 sts).  
 Work five rows stocking stitch.  
 Work increase row a fourth time (26 sts).  
 Work five rows stocking stitch.

Work **decrease row:** k1, ssk, k to last three sts,  
 k2tog, k1 (24 sts). Purl one row. Repeat the last  
 two rows twice more (20 sts).

Work **double decrease row:** K1, ssk, ssk,  
 k to last five sts, k2tog, k2tog,  
 k1 (16 sts). Purl one row. Cast off.

### Finishing

Sew side seams of body leaving a 4cm hole  
 at each shoulder for sleeves. Sew side seams  
 of sleeves from cuff to decrease rows, then sew  
 each sleeve into place in those 4cm holes.  
 Sew in ends, wash, and block.

## Glossary

MC = main colour      Rib = knit 1, purl 1

CC = contrasting colour      K = knit

CO = cast on      P = purl

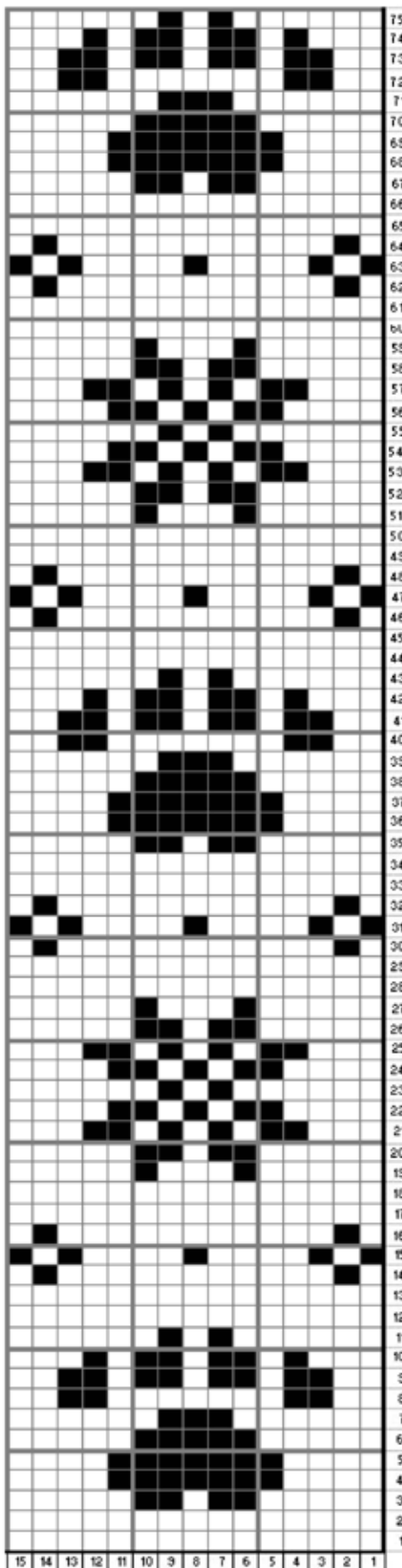
**Kfb** = increase one stitch by knitting into the front  
 and the back leg of this stitch.

**Stocking Stitch** = knit on front and purl on back of piece.

**K2TOG** = decrease one stitch by inserting your right-hand  
 needle into two stitches and knitting them together.

**SSK** = decrease one stitch by slipping two stitches,  
 one at a time, from the left needle to the right.  
 Then insert left-hand needle back into those  
 two stitches and knit them together.

# Knit your way into *Holiday Mode*



**Yarn:** Jawoll Superwash Solids, 50g/210m. One skein each of Grass Green 198 (MC), and Purple 190 (CC)

**Needles:** 2.75mm in your choice of straight or circulars

**Notions:** darning needle, scissors

**Gauge:** 28 sts = 4"

## Remote Sweater Pattern:

### Front

CO 15 stitches. Rib for 1.5cm (approx. 6 rows)

Work chart from start to finish, do not cast off.

### Back

Continue working with with MC in stocking stitch until piece measures 38cm. Rib for 1.5cm Cast off.

### Sleeves (make two)

CO 18 sts.

Rib for 1.5cm (approx. 6 rows).

Work four rows stocking stitch.

Work **increase row:** kfb, k to last two sts, kfb, k1 (20 sts).

Work five rows stocking stitch. Work increase row a second time (22 sts).

Work five rows stocking stitch. Work increase row a third time (24 sts).

Purl one row.

Work **decrease row:** k1, ssk, k to last three sts, k2tog,

k1 (22 sts). Purl one row. Repeat the last two rows twice more (18sts).

Work **double decrease row:** K1, ssk, ssk, k to last five sts, k2tog,

k2tog, k1 (14 sts). Purl one row. Cast off.

### Finishing

Sew side seams of body leaving a 3cm hole at each shoulder for sleeves.

Sew side seams of sleeves from cuff to decrease rows, then sew each sleeve into place in those 3cm holes. Sew in ends, wash, and block.

## Glossary

MC = main colour

CO = cast on

K = knit

CC = contrasting colour

Rib = knit 1, purl 1

P = purl

Kfb = increase one stitch by knitting into the front and the back leg of this stitch.

Stocking Stitch = knit on front and purl on back of piece.

K2TOG = decrease one stitch by inserting your right-hand needle into two stitches and knitting them together.

SSK = decrease one stitch by slipping two stitches, one at a time, from the left needle to the right. Then insert left-hand needle back into those two stitches and knit them together.